

**house.**

PARTNERSHIP

Moving estate agency on



**h.**

## 5 RIVERSIDE APARTMENTS

98 Thames Street  
Weybridge KT13 8NH

---

Duplex apartment with private garden, close to the River Thames, and conveniently located for Weybridge town centre

- Entrance hall
- Sitting room
- Study
- Kitchen / breakfast room
- 2 bedrooms
- Bathroom
- Cloakroom
- Private garden
- 2 allocated parking spaces
- EPC: C



h.




h.

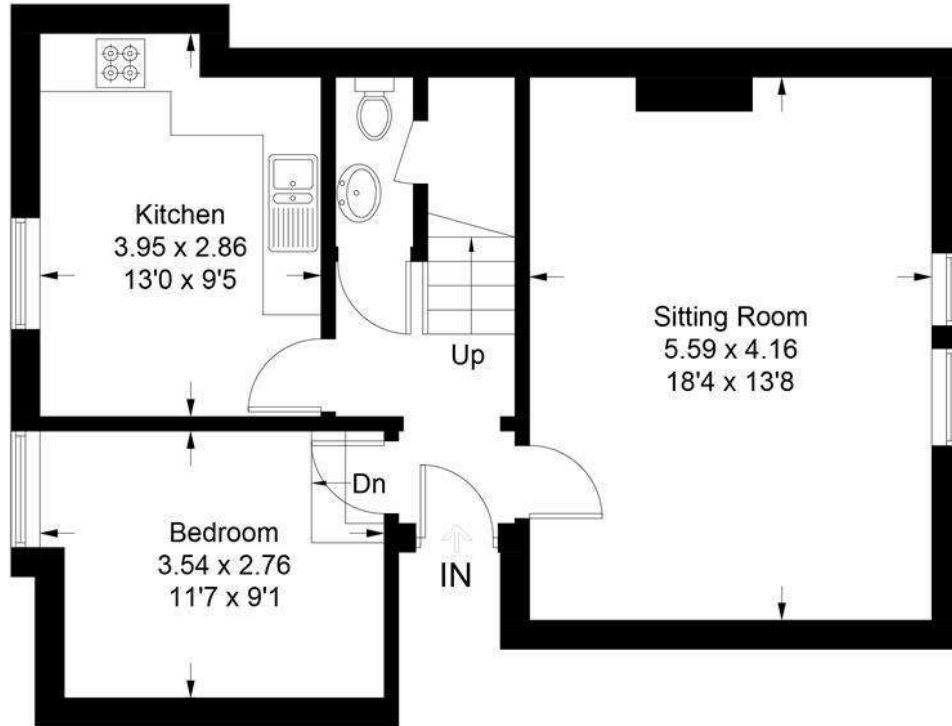
properties perfectly presented



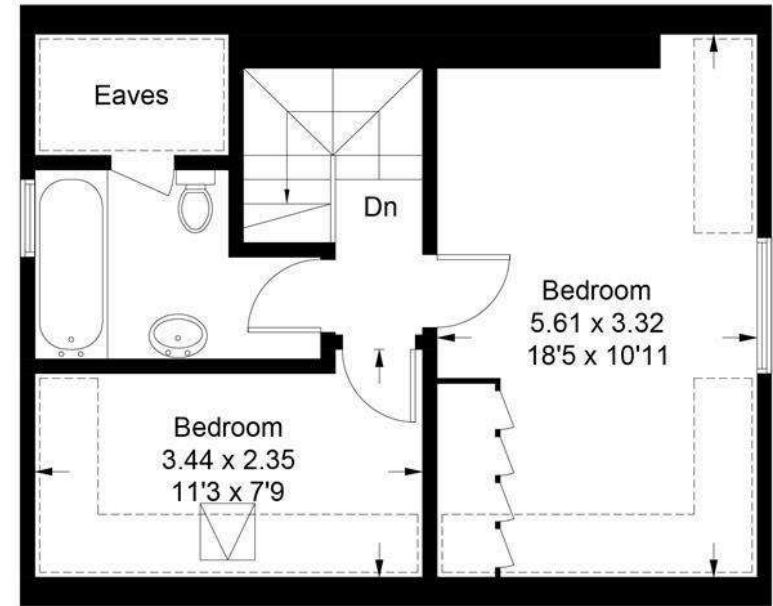
Approximate Gross Internal Area = 93.5 sq m / 1006 sq ft  
(Including Eaves)



 = Reduced headroom below 1.5m / 5'0



**First Floor**



**Second Floor**

This plan is for layout guidance only. Not drawn to scale unless stated. Windows and door openings are approximate. Whilst every care is taken in the preparation of this plan, please check all dimensions, shapes and compass bearings before making decisions reliant upon them. (ID865195)

# h.

## HOUSE INFORMATION

Approximate total gross internal area:  
Apartment 1,006 sq ft / 93.5 sq m (including  
Eaves).

Services: All mains services. Gas-fired central  
heating.

Local authority: Elmbridge Borough Council.  
Tel: 01372 474474.

Viewing: Strictly by appointment. Tel: 01932  
283288.

Energy Efficiency Rating		Current	Potential
Very energy efficient - lower running costs			
102 plus) A			
82-101) B		75	76
69-81) C			
55-68) D			
39-54) E			
21-38) F			
1-20) G			
Not energy efficient - higher running costs			
England & Wales		EU Directive 2002/91/EC	



t. 0800 917 0447

w. [housepartnership.co.uk](http://housepartnership.co.uk)

f in p @